



WE CONTINUE TO CARE

At Chapman House we have a vision of extending care beyond the front door. As a result this spring we began offering a bereavement telephone support program with specially trained grief and bereavement volunteers. For a period of a year after the death of a resident, with consent family members are called by these volunteers to check-in, offer resources, speak about our memorial service that they will be invited to attend, but most importantly to be present to simply listen confidentially.

With the support of our first grant from Community Foundation Grey Bruce we were also able to initiate a biweekly Bereavement Cafe in October. This casual drop in program held at Chapman House is facilitated by a Spiritual Care person and assisted by bereavement volunteers. Cozy conversations, sharing of hearts and minds, refreshments and resources all in a confidential safe atmosphere. Grieving can be made a little less difficult when shared with others who understand.

These new programs are a great compliment to the quarterly memorial services held as a candlelight commemorative celebration for families and friends of those that lived and died at Chapman House.



GRIEF & BEREAVEMENT SUPPORT

For more information on any of our grief and bereavement support services please visit:

www.greybrucehospice.com

or contact us at:

519-370-7239

info@greybrucehospice.com

REPORT FROM THE EXECUTIVE DIRECTOR

I am constantly inspired by the dedication and commitment of every single employee and volunteer associated with hospice. Working together as an elite team, daily this group of incredible people enable our organization to deliver to those in need, a level of comfort, dignity and respect that is truly exceptional.

We are making very effective use of our new hospice home with occupancy averaging 90% since we opened, well above the Ministry of Health's requirement of 80%. This past year we were able to care for 98 residents. Our regional influence is being felt with 53% of these people coming to us from outside of Owen Sound.

There is a definite "feeling in the air" when any person spends time at Chapman House. The special feeling is a unique blend of genuine cheerfulness and compassion with a big dose of caring. My description probably hasn't done this feeling proper justice; ask anyone who has spent time here and they will tell you it truly exists. In my opinion it reflects the spirit and character of the amazing people who volunteer and work at hospice day in and day out.

This past year has been full of change as we continue to adjust to our new hospice home, training new staff, increasing the number and type of volunteers, learning about managing a kitchen operation and introducing much needed bereavement support programming.

Looking forward there will be even more change as we ready ourselves to establish a much-needed satellite hospice in south Bruce/Grey. Our challenge will be to duplicate the exceptional level of care and special "feeling in the air"; not an easy task, however, knowing the character and commitment of all those involved I am confident that together we will succeed.



Alex Hector
Executive Director
Residential Hospice of Grey Bruce



Average Occupancy Rate



Residents provided with
compassionate comfort
care in the past year.

LOVE FROM HOSPICE FAMILIES

"Our family is truly grateful for the love and support you showed each and everyone of us during our last days/hours with my grandpa. He was cared for in every way possible. My grandma was so happy she was able to sleep by his side like she has for the past 73 years. We will forever feel blessed we all had this ever lasting memory."

"Our loved one was at Chapman House for less than 24 hours but the care he got in his last hours was excellent. It was where he wanted to be, so that I could spend the night beside him. Thank you for inviting him there, and thank you for honouring him as he departed. Blessings!"

"Thank you for making Gram's stay so comfortable & pleasant for her. You offered wonderful hospitality to all of us. Thank you for being so warm, caring & friendly. You all seemed to know when to be there and when we needed time alone with her. We very much appreciate all your kindness & support. We couldn't have imagined being in a better place with Gram as she left this world."

"My partner and I were guests last weekend, visiting one of your residents. We'd never been in a hospice before, and were overwhelmed by the quality of care, and the peace and dignity of the facility. I wanted to hug each and every staff and volunteer. You're beautiful people doing powerful work. Thank you for helping our friends so gracefully through their journey. My next stop on your website is the donation page."



Interested in a new and rewarding experience?

Start making a difference today! Consider volunteering at Chapman House or helping us with fundraising events.

**Sign up online or contact our Volunteer Coordinator
volunteer@greybrucehospice.com or 519-370-7239**



Is your service club, church group or organization looking for a guest speaker? We would love to share our story. Call us at 519-370-7239 to arrange a speaker.



HIKE FOR HOSPICE

The 2018 Grey Bruce Hike for Hospice was a resounding success. The hike took place on Sunday May 6th, 2018 at 8 locations across Grey & Bruce counties. Hikers from across Grey Bruce gathered to honour the memory of loved ones and show their support for hospice care in our community.

The combined efforts from donations raised and sponsorship totaled over **\$170,000**

We would like to extend a heartfelt THANK YOU to all of the hikers, donors, sponsors and volunteers.



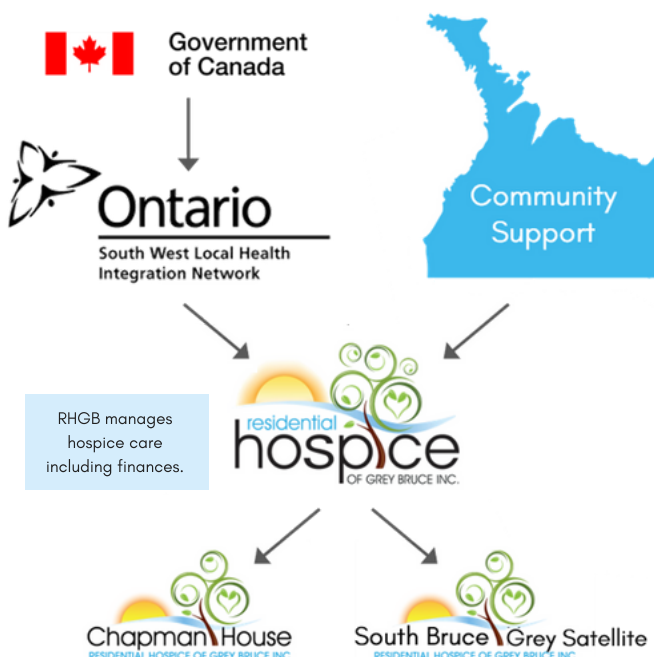
**2019 HIKE FOR HOSPICE
SUNDAY MAY 5TH**



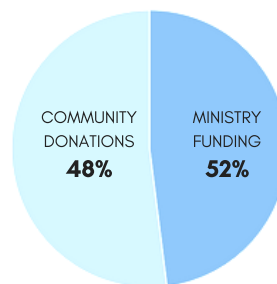
Chapman House our residential hospice home is staffed with nurses and personal support workers 24 hours a day, 7 days a week. The average daily cost per bed of \$600 is less than half the cost of a hospital bed in Ontario. We provide an invaluable service to our community, at no cost to our residents and their families.

Unfortunately, although the Province of Ontario fully supports the palliative care we provide, funding is only provided for nursing and personal support worker staffing. This means all other aspects of our operation such as patient meals, medical equipment and the comfort of our rooms are only possible through donations.

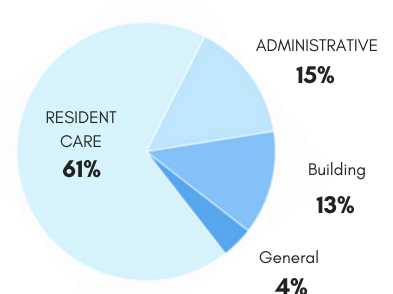
Each year we rely heavily on our community to help cover these costs and make ends meet. Your generous support will ensure that hospice care can continue at Chapman House and will help pave the way for a future satellite location in South Bruce Grey.



2018/2019 REVENUE
FORECASTED AT \$1,647,500



2018/2019 EXPENSES
FORECAST AT \$1,702,432



The comfort care provided at Chapman House is free to all residents and their families because we believe that a person's financial condition should not determine whether they have access to specialized end-of-life care...and with your help we can keep it that way.

Show your support by making a donation today!

TO THE ICE CREAM ANGELS

"My father spent almost 3 months at Chapman House. Our family was treated with kindness. We appreciated the wisdom and expertise of all staff and volunteers. The ever changing landscape out the wall of glass in dads room provided a comforting backdrop. The many rooms for chats, the light, the connection to the outdoors all helped to support our journey.

Ice cream has always been comfort food for my parents. My moms nerves were soothed with her daily ice cream cone. My father lived on milkshakes, sundaes and ice cream.

During my dad's stay my parents celebrated their 63rd wedding anniversary. Becky prepared 2 brilliant sundaes to celebrate.

Your generous funding of such an incredible facility will remain in our hearts forever. The added touch of unlimited Chapman's ice cream provides hugs when nothing else seems to comfort.

Bless you for your support on my dads journey."



Top: Wendy having a special visit from an old friend.

Left: Jacob used his allowance to buy groceries for our kitchen. **Right:** A generous showing of support from the Power Workers Union - Bruce Site Equity Committee

CONNECT WITH US @ GBHOSPICE



Email Newsletter

In an effort to minimize costs, please consider visiting our website and signing up for our email newsletter.

Visit our Hospice Home:

Visit our website or call us if you are interested in a guided tour of Chapman House.

Contact us at:

info@greybrucehospice.com
or 519-370-7239

Deliver or Mail Donations to:

1725 10th Street East
Owen Sound, Ontario
N4K 0G5

YOU CAN PROVIDE COMFORT, CARE & DIGNITY

Every donation our hospice home receives helps us to provide compassionate comfort care for Grey Bruce residents and families. Your thoughtful gift will help us fulfill our mission. We thank you for any contribution you can afford.

NAME (PLEASE PRINT) _____

MAILING ADDRESS _____

CITY _____ PROV. _____ POSTAL CODE _____

PHONE _____ EMAIL _____

☐ I would like to receive future newsletters by email.

☐ I would like to receive my donation receipt by email.

GIFT

I would like to make a one time donation of:

☐ \$25 ☐ \$50 ☐ \$100 ☐ \$250 ☐ \$500 ☐ \$1,000 ☐ OTHER \$ _____

☐ I would like to sponsor a day of comfort care at Chapman House for \$50/month in honour of a special day that has meaning for me. **Please include a void cheque or credit card information.**

☐ I am interested in using securities to make a donation.

☐ Please contact me about planned giving or making a legacy gift.

PAYMENT

☐ Cash ☐ Cheque ☐ Credit Card _____ Exp. ____/____

I am making this donation in honour of: _____



MAKE A DONATION ONLINE BY VISITING
WWW.GREYBRUCEHOSPICE.COM