



Grey Bruce Hospice - Chapman House Newsletter

Welcome to the First Newsletter of 2025!

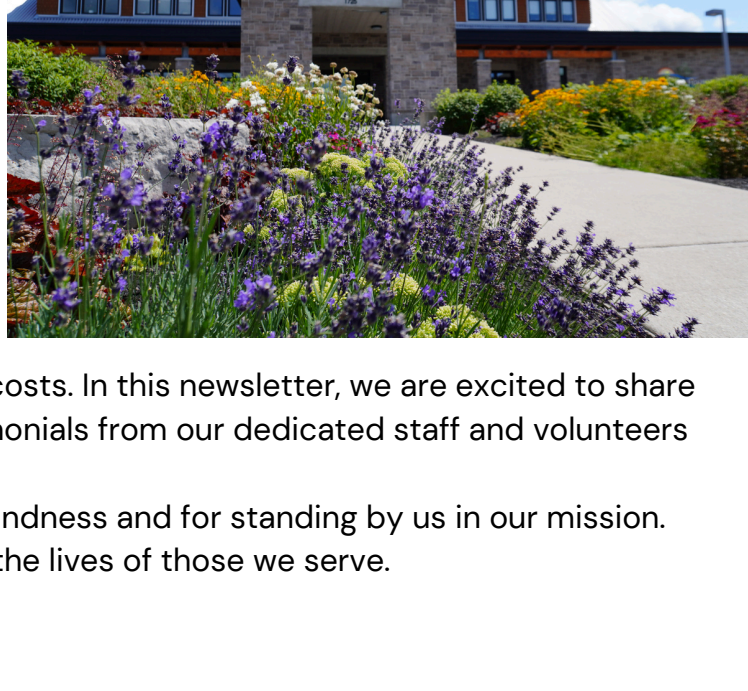
Greetings from Chapman House! As we embrace the new year, we find ourselves in the midst of a snowy and cold start. However, the chill in the air has not deterred our dedication to providing exceptional palliative care within our community. The demand for our vital services continues to grow, and we are immensely grateful for the unwavering support of our donors and supporters during our end-of-year campaign. Your contributions are essential. Given that government funding falls short, we rely on fundraising to cover over 50% of our operational costs. In this newsletter, we are excited to share updates on upcoming fundraisers, heartfelt testimonials from our dedicated staff and volunteers and our upcoming bereavement services.

Thank you once again for your countless acts of kindness and for standing by us in our mission. Together, we can make a significant difference in the lives of those we serve.

Amy McConachie
Donor Relations Coordinator



Amy McConachie



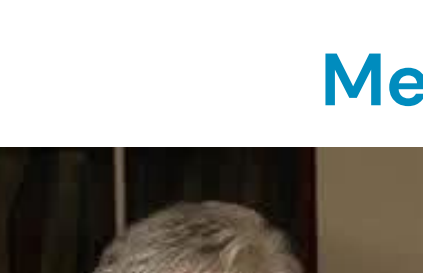
February is Hospice Hero Month at Grey Bruce Hospice!

This month, we're shining a light on the incredible individuals and groups who make a difference in the lives of our residents and their families. A Hospice Hero is someone who makes a \$50 or more monthly donation to Grey Bruce Hospice in dedication to a loved one or special occasion. Your support ensures compassionate, no-cost palliative care for those who need it most.

Choose your special day, and each year, your dedication will be featured on our [social media](#), [website calendar](#), and in-house.

Join our Hospice Hero community this month and help provide comfort, dignity, and peace—every day. Together, we can celebrate the compassion, care, and dedication that make Grey Bruce Hospice such a special place.

The Hospice Heroes Initiative has been made possible thanks to the generosity of the [James Goreski Foundation](#).



[Learn More About Our Hospice Heroes and How You Can Become One Here!](#)

Meet A Hospice Hero!



Meet Gail Norris: A Committed Monthly Donor and Founding Board Member

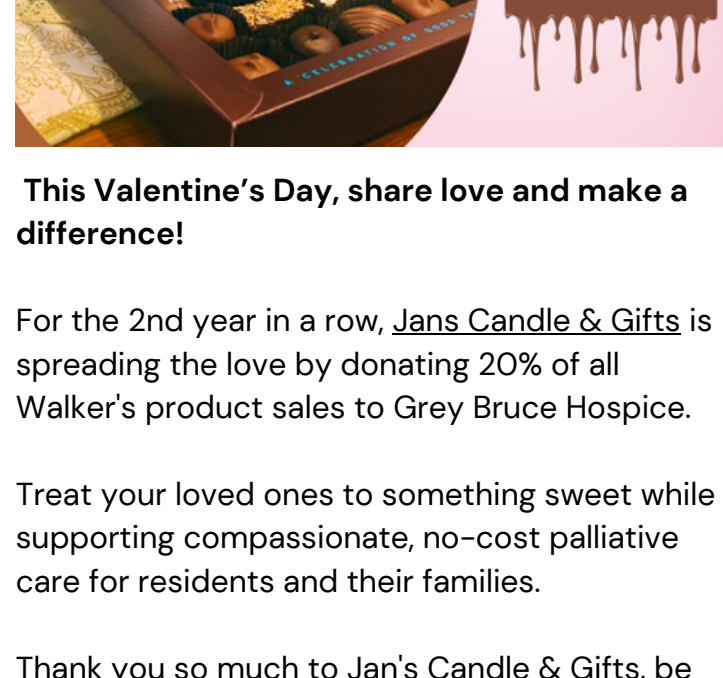
Gail Norris is a remarkable individual whose dedication to the community is evident through her role as a monthly donor and founding board member of Chapman House Hospice. With a wealth of experience serving on various boards, including the Alzheimer Society and local Hospitals, Gail embodies the spirit of community engagement.

Her passion for palliative care stems from her personal journey as a caregiver for a loved one facing a life-limiting illness. This experience inspired her to turn her suffering into a force for good by completing a palliative care course, equipping her with the knowledge and skills to help others through challenging times.

Gail's commitment to giving back is particularly reflected in her monthly donations, which she believes significantly impact the local community. She emphasizes the importance of hospice care, noting that it provides unparalleled support for both residents and their families, allowing individuals to pass away with dignity and surrounded by love, free from stress.

As a monthly donor, Gail appreciates how even a small contribution can accumulate over time, leading to a significant difference in the lives of those in need. Her dedication serves as an inspiring reminder of the power of community and the profound effects of giving back.

Upcoming FUNdraisers



This Valentine's Day, share love and make a difference!

For the 2nd year in a row, [Jan's Candle & Gifts](#) is spreading the love by donating 20% of all Walker's product sales to Grey Bruce Hospice.

Treat your loved ones to something sweet while supporting compassionate, no-cost palliative care for residents and their families.

Thank you so much to Jan's Candle & Gifts, be sure to visit Jan's Candle & Gifts to shop for a cause this Valentine's Day!



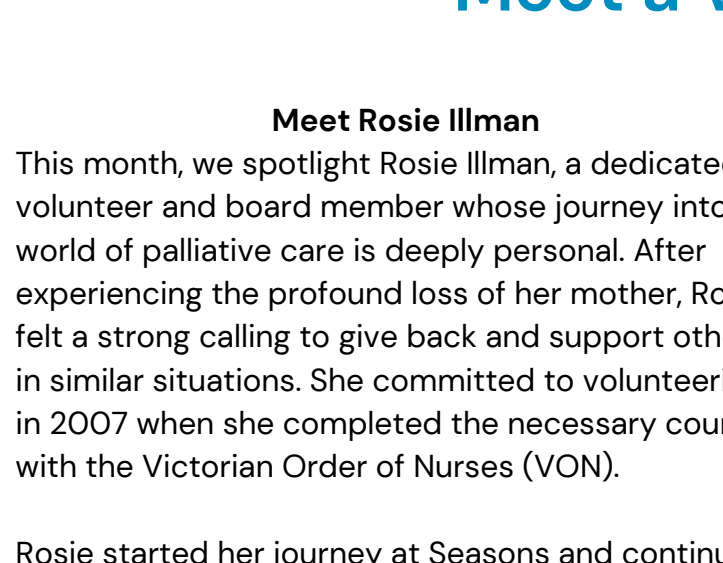
Grey Bruce Hospice's Pot of Gold 50/50 Raffle is sure to bring you that luck o' the Irish!

Tickets go on sale: February 20th
Early Bird Draw: March 5th – a guaranteed \$500 winner!

Grand Prize Jackpot Draw: March 17th, St. Patrick's Day!

Every ticket purchased helps provide compassionate, no-cost palliative care to those who need it most. Will you be the lucky one to find the pot of gold at the end of the rainbow?

Stay tuned for the ticket link and get ready to win big while giving back!



Save the Date! Hike for Hospice is Back!

Mark your calendars! Grey Bruce Hospice's Hike for Hospice is happening on May 24th at Harrison Park in Owen Sound.

This annual event brings our community together to honor loved ones, celebrate compassionate care, and raise vital funds for no-cost palliative care at Chapman House.

Gather your friends and family, lace up your walking shoes, and join us in making a difference. More details coming soon!

Meet a Volunteer!

Meet Rosie Illman

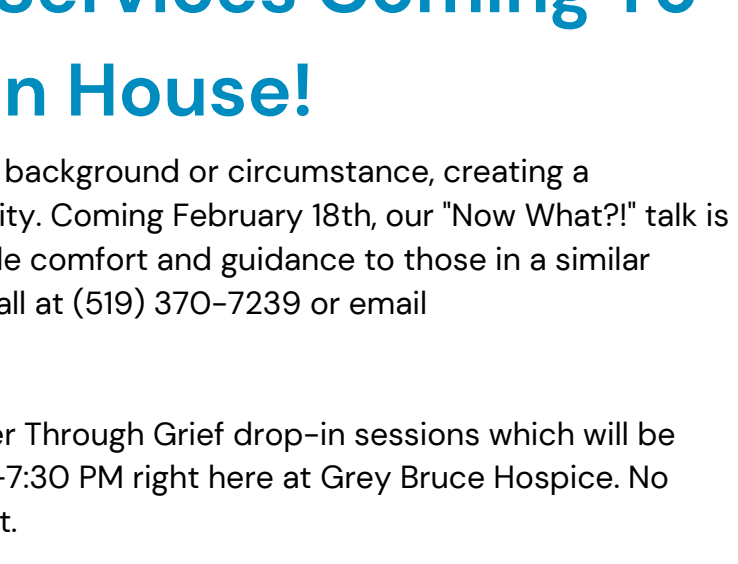
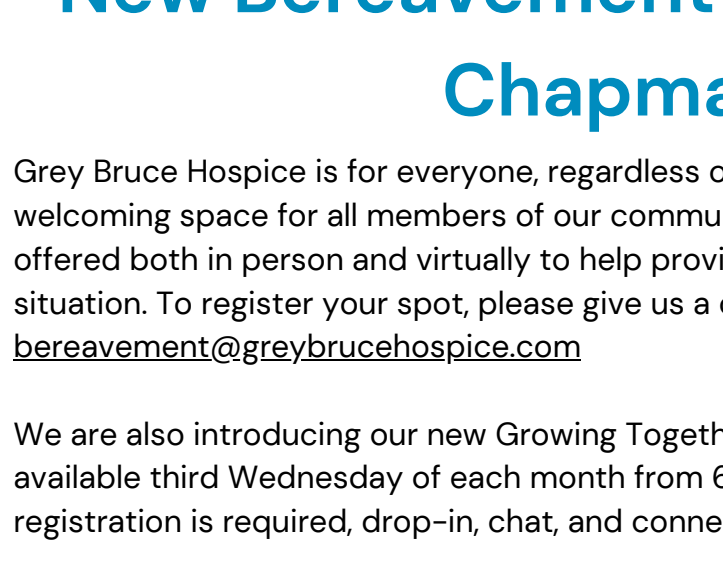
This month, we spotlight Rosie Illman, a dedicated volunteer and board member whose journey into the world of palliative care is deeply personal. After experiencing the profound loss of her mother, Rosie felt a strong calling to give back and support others in similar situations. She committed to volunteering in 2007 when she completed the necessary courses with the Victorian Order of Nurses (VON).

Rosie started her journey at Seasons and continued volunteering at Chapman House when it was built. As a volunteer, she serves residents and their families, offering warmth, compassion, and friendship. Each interaction is an opportunity for Rosie to provide dignified, patient-centred care to those facing progressive, life-limiting illnesses.

In addition to her volunteer work, Rosie plays a crucial role as the secretary of the Grey Bruce Foundation Board. Her decision to take on this position was made with heartfelt conviction. She believes that those of us with the capacity to volunteer should contribute our skills to causes that resonate with us. For Rosie, that cause is Chapman House, and she considers it an honour to be part of this meaningful team.

Thank you, Rosie, for all that you do. Your dedication and compassion make a difference in the lives of many.

[Interested In Becoming A Volunteer? Click Here To Learn More & Apply!](#)

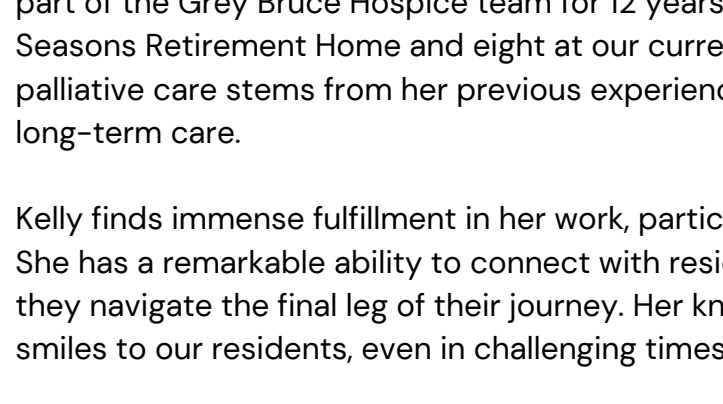


New Bereavement Services Coming To Chapman House!

Grey Bruce Hospice is for everyone, regardless of background or circumstance, creating a welcoming space for all members of our community. Coming February 18th, our "Now What?!" talk is offered both in person and virtually to help provide comfort and guidance to those in a similar situation. To register your spot, please give us a call at (519) 370-7239 or email bereavement@greybrucehospice.com

We are also introducing our new Growing Together Through Grief drop-in sessions which will be available third Wednesday of each month from 6-7:30 PM right here at Grey Bruce Hospice. No registration is required, drop-in, chat, and connect.

Meet a GBH Staff Member!



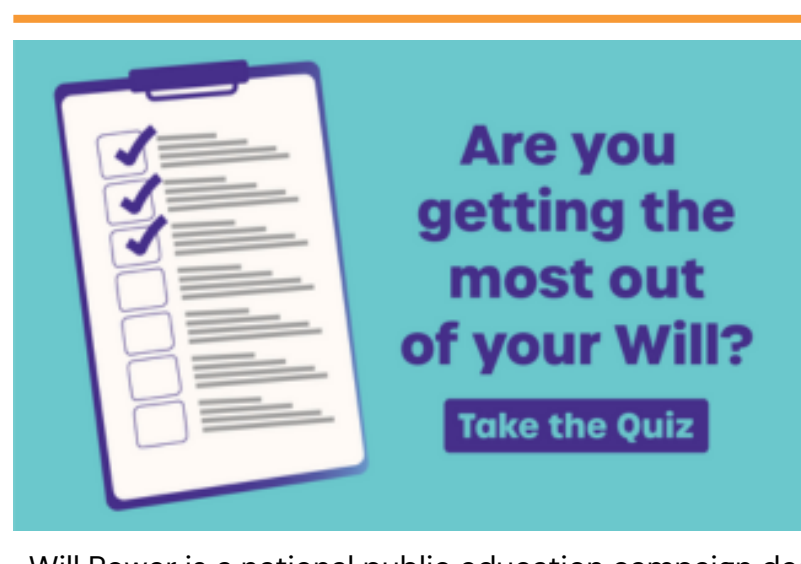
Meet P.S.W. Kelly O'Donohoe

We are thrilled to feature Kelly O'Donohoe as our Staff Highlight this month. Kelly has been an integral part of the Grey Bruce Hospice team for 12 years, four of which were spent at our original site, Seasons Retirement Home and eight at our current Chapman House location. Her passion for palliative care stems from her previous experiences at the Day Away Program and Lee Manor in long-term care.

Kelly finds immense fulfillment in her work, particularly supporting individuals during their final days. She has a remarkable ability to connect with residents, providing comfort and companionship as they navigate the final leg of their journey. Her knack for reading the room ensures that she can bring smiles to our residents, even in challenging times.

In addition to her compassionate care, Kelly has shared her artistic talents with us. Over the years, she has drawn different illustrations for Residents, creating lasting memories. Recently, she showcased her creativity through a stunning paper quilling artwork – featuring the names of all Residents we served in 2024, which is a beautiful testament to her dedication (see picture included).

We are truly blessed to have such a dedicated staff member like Kelly on our team, who goes the extra mile to make a meaningful difference in the lives of those we serve. Thank you, Kelly, for your unwavering commitment and compassion!

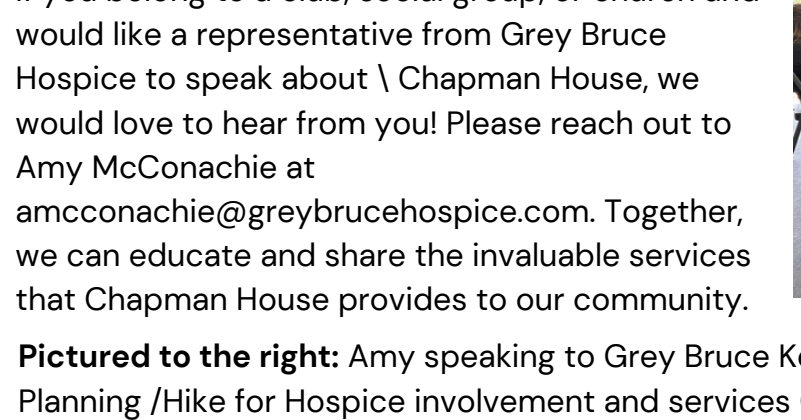


Plan for Your Future with Advanced Care Planning

Advanced care planning is an important process that encourages you to reflect on your wishes, beliefs, and values regarding health and personal care. It also involves considering who you would like to make decisions on your behalf if you ever become unable to consent to your own care.

At Chapman House, we invite you to stop by and pick up one of our free advanced care planning workbooks, available in our front lobby at any time. We believe it's never too early to start planning for your future, and

these resources can help guide you through this essential process. To learn more about advanced care planning, visit advancecareplanningontario.ca. Take the proactive step today for peace of mind tomorrow!



Will Power is a national public education campaign designed to inspire Canadians to think differently about charitable giving, and empower them to create positive change through their Wills. Have you considered including Grey Bruce Hospice in your Will? You can discover your Will's potential by taking a quick quiz on [our Will Power site](#). Challenge your friends and family to take the quiz and uncover the hidden potential within their Wills. Your legacy has the power to change lives.

Have an event you'd like us to speak at?

If you belong to a club, social group, or church and would like a representative from Grey Bruce Hospice to speak about \ Chapman House, we would love to hear from you! Please reach out to Amy McConachie at amcconachie@greybrucehospice.com. Together, we can educate and share the invaluable services that Chapman House provides to our community.

Pictured to the right: Amy speaking to Grey Bruce Kennel Club members on Advanced Care Planning /Hike for Hospice involvement and services Chapman House provides.



Follow Us On Social Media!

Stay up-to-date in real time to hear all about events, special moments, and exciting new things happening at Grey Bruce Hospice.

